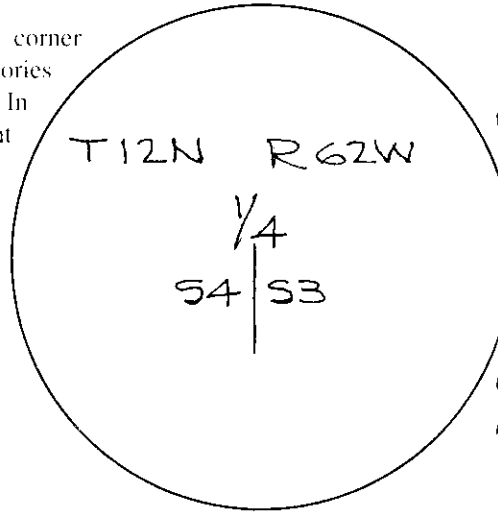


Wyoming Certified Land Corner Recordation Certificate

This form is to be completed in accordance with W.S. 36-11-101, printed in black ink or typed, and shall be for one individual corner.

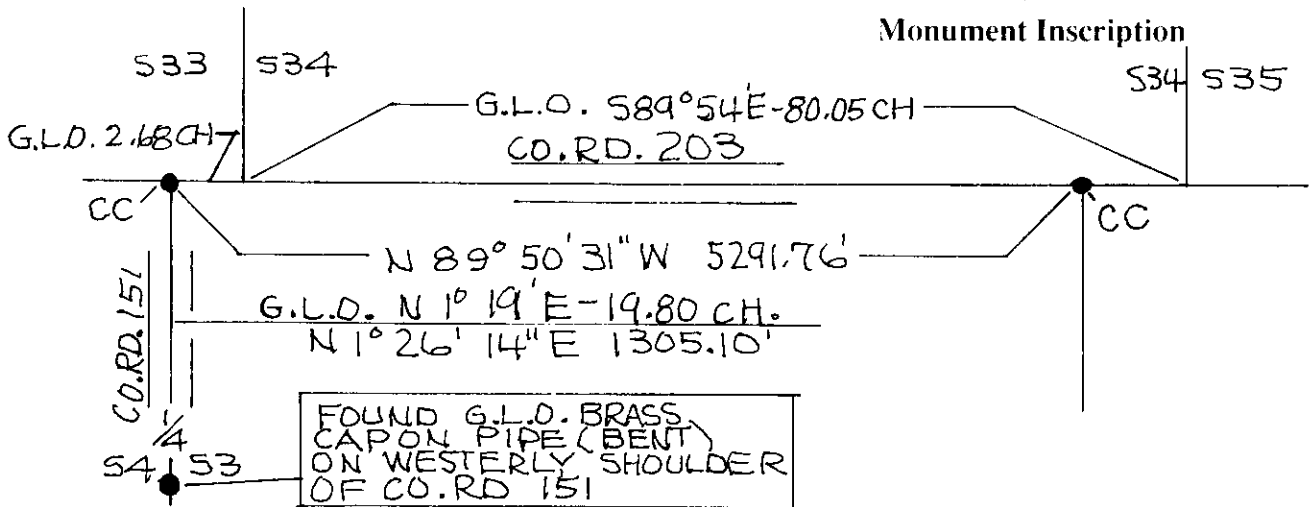
Describe below, or show in sketch attached to this form, the corner evidence found. Include condition and type of monument, accessories and ties. Describe any maintenance or rehabilitation performed. In the circle to the right, show monument inscription. If monument is determined lost or obliterated, restate the G.L.O. or BLM original field note record; describe or show the procedure used to reestablish the corner and all data as above for a found monument.



FOUND
G.L.O.
BRASS
CAP ON
BENT
PIPE ON
WESTERLY
EDGE OF
CO. RD.
151

Field Date FEB-JUN 1993 Office Reference _____

G.L.O. REFERENCE
RETRACEMENT TOWNSHIP 12 N.
RANGE 62 W. SEE 373-A



Monument Inscription

State of Wyoming
Office of County Clerk
County of _____

This Certified Land Corner Recordation Certificate was filed for record on the _____ day _____, 19____, in Book No. T 12 N. R 62 W., on Alpha-Numeric coordinate C-13 and was noted on the Cross Index Plat.

91 MAR 23 PM 12 04
 LARAMIE COUNTY
 CHEYENNE, WY.
 138689

County Clerk

Corner Type: Aliquot Corner Other Section(s) _____ Meridian _____
 Corner Name 1/4 4/3 Township 12 N Range 62 W Page _____
 Sheet _____ of _____

Sheet _____ of _____

Signature, Seal, and Date

William B. Armstrong
 Professional Engineer (Civil)
 WILLIAM B. ARMSTRONG
 3/22/94
 WYOMING

ARMSTRONG ENGINEERING SERVICES
 915 E. CARLSON
 CHEYENNE WY 82009
 (307) 632-2559

Street Address
 City, State, ZIP
 Telephone, FAX

I, WILLIAM B. ARMSTRONG, Wyoming PLS/PE 3153 certify that I, or others under my supervision, have performed the work as described above and completed this form.

Certification

North (Y) = _____ East (X) = _____
 Zone _____
 NAD 1927 NGVD 1929 NAD 1983 NAVD 1988
 feet/meters
 Latitude _____ Longitude _____
 Scale Factor _____ Geoid Height _____

State Plane Coordinates (optional)

1	2	3	4	5	6	7	8	9	10	11	12	13	14	15	16	17	18	19	20	21	22	23	24	25	
A	6	5	4	3	2	1																			
B																									
C																									
D																									
E																									
F																									
G																									
H																									
J																									
K																									
L																									
M																									
N																									
O																									
P																									
R																									
S																									
T																									
U																									
V																									
W																									
X																									
Y																									
Z																									

Section, quarter and sixteenth corners will be marked with a dot at the corner location. The alpha-numeric coordinate number is then determined for the intersection of the two lines. A corner that applies to two or more townships shall be filed under all that apply by the use of photo copies.

Closing corners will be indexed under the township in which they control ownership. For 1/64, 1/256, 1/1024 and non-alliquot corners lying between grid designations, mark the appropriate grid area with a dot and use the index code to the north and west (local systems may be used if the method is approved by the County Surveyor or Clerk and a written description of its use is filed in the front of each book of certificates).

Directions for using the Cross Index Plat

Cross Index Plat